

Original Paper

Tools for App- and Web-Based Self-Testing of Cognitive Impairment: Systematic Search and Evaluation

Anna Pavlina Charalambous¹, PhD; Annie Pye², PhD; Wai Kent Yeung², BSc, MSc, PhD; Iracema Leroi^{2,3}, MD; Malcolm Neil⁴; Chryssoula Thodi¹, PhD; Piers Dawes⁵, PhD

¹School of Sciences, European University Cyprus, Nicosia, Cyprus

²Division of Neuroscience and Experimental Psychology, University of Manchester, Manchester, United Kingdom

³Global Brain Health Institute, Trinity College Dublin, Dublin, Ireland

⁴University of Dundee, Dundee, United Kingdom

⁵Manchester Centre for Audiology and Deafness, University of Manchester and the Manchester Academic Health Sciences Centre, Manchester, United Kingdom

Corresponding Author:

Piers Dawes, PhD

Manchester Centre for Audiology and Deafness

University of Manchester and the Manchester Academic Health Sciences Centre

A3.09 Ellen Wilkinson Building

Manchester, M13 9PL

United Kingdom

Phone: 44 1613061758

Email: piers.dawes@manchester.ac.uk

Abstract

Background: Tools for app- and Web-based self-testing for identification of cognitive impairment are widely available but are of uncertain quality.

Objective: The objective of this study was to undertake a scoping review of app- and Web-based self-tests for cognitive impairment and determine the validity of these tests.

Methods: We conducted systematic searches in electronic databases, including Google search, Google Play Store, and iPhone Operating System App Store, using the search terms “Online OR Internet-based AND Memory OR Brain OR Dementia OR mild cognitive impairment OR MCI AND Test OR Screen OR Check.”

Results: We identified 3057 tools, of which 25 were included in the review. Most tools meeting the inclusion criteria assessed multiple cognitive domains. The most frequently assessed domains were memory, attention, and executive function. We then conducted an electronic survey with the developers of the tools to identify data relating to development and validation of each tool. If no response to the survey was received, Google (to identify gray literature), Google Scholar, and Medical Literature Analysis and Retrieval System Online were searched using key terms “(name of developer, if available)” AND “(the name of the tool)” to identify any additional data. Only 7 tools had any information concerning psychometric quality, and only 1 tool reported data on performance norms, reliability, validity, sensitivity, and specificity for the detection of cognitive impairment.

Conclusions: The number of cognitive self-assessment electronic health tools for cognitive impairment is increasing, but most are of uncertain quality. There is a need for well-validated tools and guidance for users concerning which tools provide reliable information about possible cognitive impairment that could warrant further investigation.

(*J Med Internet Res* 2020;22(1):e14551) doi: [10.2196/14551](https://doi.org/10.2196/14551)

KEYWORDS

telemedicine; eHealth; mHealth; dementia; mild cognitive impairment; self-assessment

Introduction

Background

By 2050, the number of people living with dementia is expected to increase to 152 million globally [1]. In many areas of the world, dementia remains underdiagnosed. For example, in many high-income countries, less than half of the people living with dementia receive a formal diagnosis [2]. In low- and middle-income countries (LMICs), less than 10% of the people with dementia receive a formal diagnosis [1,3-5]. Raising awareness of dementia and self-detection of cognitive decline have the potential to increase the diagnosis rate, thereby fostering appropriate support for people with dementia. Self-detection may also facilitate earlier diagnosis, a critical aspect of dementia care [6]. Several national policies relating to dementia have prioritized the need to increase the diagnosis rate and ensure a timely diagnosis of dementia [6]. Self-testing for cognitive impairment, via app- or Web-based tools, may support these aspirations by identifying people who may be developing cognitive impairment and by directing them to appropriate health and social care support services.

Electronic medical and mental health information and services (referred to as electronic health [*eHealth*]) are increasingly delivered through the internet [7]. *eHealth* tools include app- and Web-based tools that can screen individuals who are at risk and/or offer self-help intervention or clinical referrals for various health conditions [8]. Dramatic increases in access to and use of internet and mobile phone technology have supported the development of *eHealth* technology. In 1995, only 1% of the global population had an internet connection [9]. In 2019, this percentage had increased to 56.3% [10]. The majority of the worldwide population that previously did not have access to a computer or a fixed-line telephone now has mobile phones [11]. In Europe, there has been a 583% growth in internet usage between the years 2000 and 2019; over 85% of the population now has access to the internet [10].

The potential benefits of *eHealth* apps include improvements in health safety, improved health care efficiency and effectiveness, reduced costs, improved decision making (eg, in reaching a diagnosis), access to remote clinicians, and medical error reduction [12]. The potential benefits of *eHealth* apps are substantial, but there is also potential for harm. The quality, safety, and effectiveness of the majority of the proliferating *eHealth* apps are unknown (eg, study by Eng and Lee [13]). Health professionals have often not been involved in the development of *eHealth* tools, and the tools have frequently been developed without appropriate validation [14-17]. Uncertainty in the quality of *eHealth* tools is worrisome in relation to tools for self-identification of cognitive impairment indicative of dementia. Furthermore, if not properly validated, there is a risk of false-positive identification that may cause needless anxiety or false-negative identification that can result in a diagnosis of dementia being missed. Formal studies are urgently needed to establish the potential benefits and mitigate the harms of mobile health (mHealth) technology.

Objectives

This review aimed to identify and assess (1) the numbers, availability, and characteristics of app- and Web-based self-assessment tools for cognitive impairment and (2) the psychometric quality of these tools to inform their future development for self-assessment of cognitive impairment.

Methods

Design

A systematic search was conducted between May 2017 and May 2018 by researchers at the University of Manchester, United Kingdom. We identified Web-based tools through the Google search engine and mobile phone and tablet apps through Google Play and the iPhone Operating System (iOS) App Store. The search terms we used were “Online OR Internet-based AND Memory OR Brain OR Dementia OR mild cognitive impairment OR MCI AND Test OR Screen OR Check.” We searched the iOS App Store and Google Play using the same search terms as in Google search, with the exception of the “online” and “internet-based” search terms. We screened the first 100 results we identified in each search for relevance according to the inclusion or exclusion criteria. Around 75% of *clicks* are in relation to the first 20 hits obtained [18]. We evaluated the first 100 results as a liberal criterion to capture all the research results that users would likely encounter. We completed a follow-up search in November 2018 and a further follow-up search in February 2019 to check that the tools identified in the first search were still available on the Web.

Inclusion and Exclusion Criteria

A tool was suitable for inclusion if it (1) was designed to be a self-administered cognitive tool, (2) was hosted on the Web or as a mobile phone app, (3) was a tool intended for detection and/or assessment of (all cause) dementia and/or mild cognitive impairment (MCI), and (4) is available for free or at a low cost (\leq £5). A sum of £5 was chosen as an upper limit for cost to select tools that are readily available and are within the average price range for mobile apps [19]. Games; puzzles; *brain training* apps; IQ, vocational, or academic achievement tools; tools for specific learning disability (eg, dyslexia); or tools that estimate future risk of dementia based on lifestyle factors were excluded as these tools do not measure current cognitive ability.

The first reviewer screened all titles obtained through each search, identifying candidate tests for inclusion. The second reviewer then screened 10% of the titles to ensure consensus opinion. Both reviewers held PhDs in cognitive psychology. Both reviewers evaluated all tools identified against the inclusion criteria, and in instances of disagreement, the third reviewer acted as an arbitrator and decided whether the tool met the criteria for inclusion.

Survey of Psychometric Quality

We identified a point of contact for the owner or developer of each tool from the respective apps or websites and sent an email invitation to complete an electronic survey about the tool. The survey was adapted from a postal survey of tests or batteries for assessment of MCI [20]. We obtained permission to adapt

the survey from the author of the original version. The survey contained questions about the content of the tool (ie, the cognitive domains it assesses), the duration of the test, normative data, and whether validity and reliability have been established (see [Multimedia Appendix 1](#)).

We collected the survey data over a 3-month period. In week 1, we sent out a covering email and survey link to the points of contact identified for each tool. In the subsequent 4 weeks, we sent weekly follow-up emails to those who had not responded and fortnightly reminder emails thereafter. Those who had not responded after 12 weeks were not contacted any further. For those tools for which we received no response to the survey or for which we could not identify and/or contact the owner of the tool, we conducted supplementary searches. Supplementary searches were run on Google (for gray literature), Google Scholar, and Medical Literature Analysis and Retrieval System Online (for published or peer-reviewed articles) to identify information relating to the development and validation of each tool. The search terms used were the name of developer (if available) AND the name of the tool. We screened the first 100 results, sorted by relevance. We then downloaded relevant titles and Web pages and saved the Web page links or relevant papers. Finally, we extracted data relating to the development and

validation of each tool from the material we had identified in supplementary searches using a data entry table based on the same parameters of the survey questionnaire.

Results

Search Findings

We identified 3057 tools (apps and websites) after searching Google search (n=1205), Google Play (n=1201), and iOS App Store (n=651; [Figure 1](#)). The initial search identified 39 tests that fit the inclusion criteria. After a follow-up search in May 2018, we removed 3 tools after we found that they had been removed from their respective app stores, leaving us with 36 tools. We sent the survey to 32 out of the 36 tools identified. For 4 tools, we were unable to identify a contact email or emails could not be delivered, and so we were unable to contact the test developers. After the survey had been completed, 1 extra tool was added as a test developer indicated its existence, resulting in 37 tools. Follow-up searches revealed that 12 tools had been removed from their app stores, leaving 25 tools included in the review ([Table 1](#)). After sending out the online survey, we obtained responses for 9 tools. Subsequently, we obtained information for 4 additional tools through supplementary searches (see [Figure 2](#)).

Figure 1. Preferred Reporting Items for Systematic Reviews and Meta-Analyses flow diagram indicating the app or tools search and screening process.

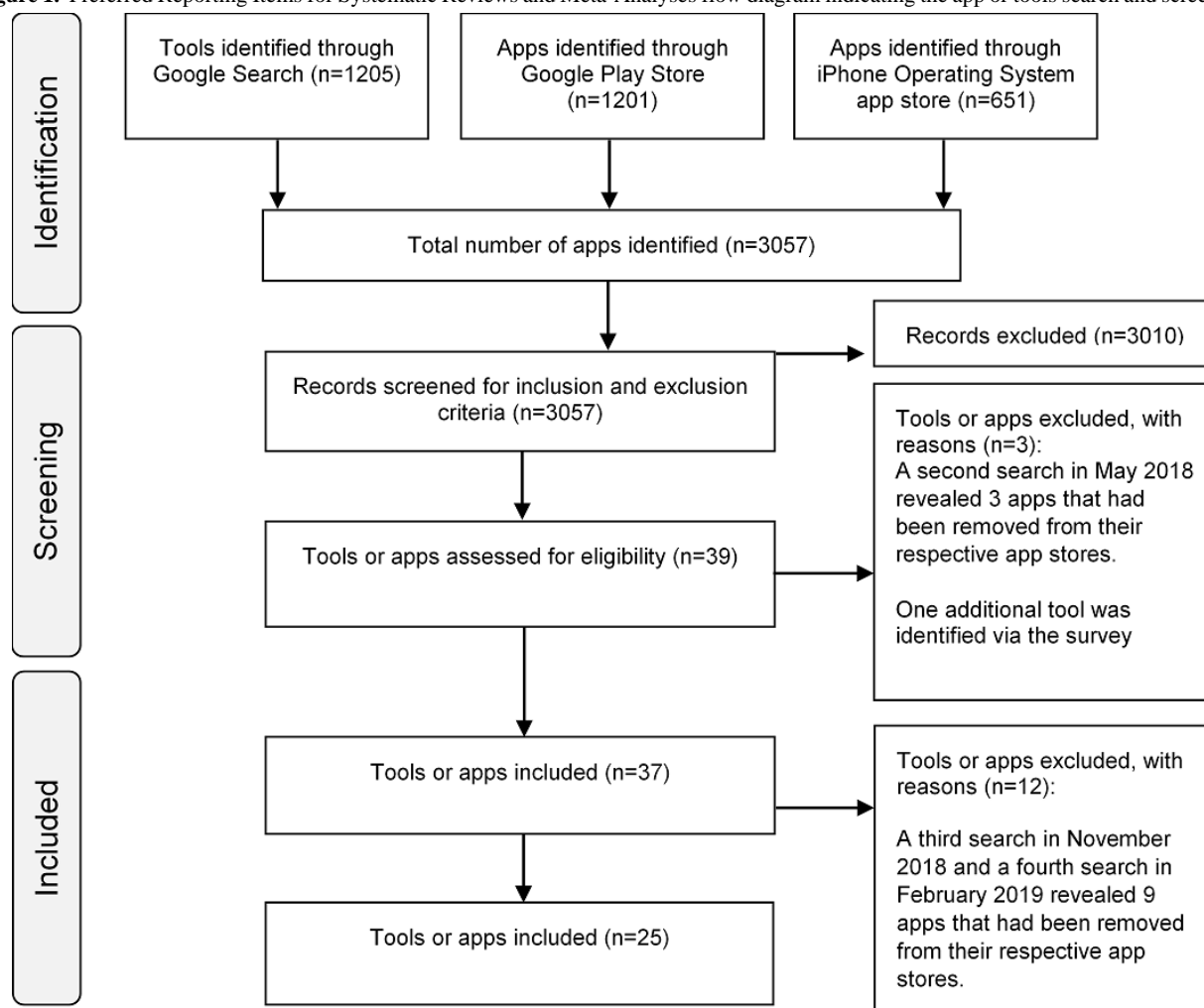


Table 1. Cognitive domains assessed by each app- and Web-based cognitive tool.

Test name	Platform	Attention	Memory	Executive function	Visual spatial ability	Other	Not available
BrainTest (electronic Self-Administered Gerocognitive Examination)	1 ^a and 2 ^b	✓ ^c	✓	✓	✓	✓	— ^d
BrainCheck	1	✓	✓	✓	✓	—	—
MemTrax—The Online Memory Screening Test (free version)	1	✓	✓	—	—	✓	—
MemTrax Proprietary	1	✓	✓	✓	✓	✓	—
Self-Assessment of Cognition	1	—	✓	✓	—	—	—
Husketest	1 and 3 ^e	—	✓	—	—	—	—
Dementia Screener	2	✓	✓	✓	—	✓	—
DANA ^f Brain Vital	2 and 3	—	—	—	—	✓	—
DANA Modular	2 and 3	—	—	—	—	✓	—
Cogniciti	1	✓	✓	—	—	—	—
Savonix Mobile	2	✓	✓	✓	—	✓	—
Imprint Memory Assessment	1	—	✓	—	—	—	—
Memory Quiz	1	—	✓	—	—	—	—
Dementia Test	1	—	✓	—	—	—	—
RateMyMemory	1	—	✓	—	—	—	—
Daily Mail Dementia Quiz	1	—	✓	—	—	—	—
Cognitive Function Test	1	—	—	—	—	—	✓
The Cleveland Clinic Brain Check-Up	1	—	✓	—	—	—	—
Mindcrowd	1	—	✓	—	—	—	—
MyBrainTest	1	—	✓	—	—	—	—
Memory Health Check	1	—	✓	—	—	—	—
On Memory	1	—	✓	—	—	—	—
Psychology Today Memory Test	1	—	✓	—	—	—	—
Brainlab Cognition	3	—	—	—	—	—	✓
Dementia Test—Risk Calculator of Dementia	3	✓	✓	—	—	✓	—
MMSE ^g	2	—	—	—	—	—	✓
Total	—	8	21	6	2	7	3

^a1 signifies Google search.

^b2 signifies Google Play Store.

^cAssessed domain.

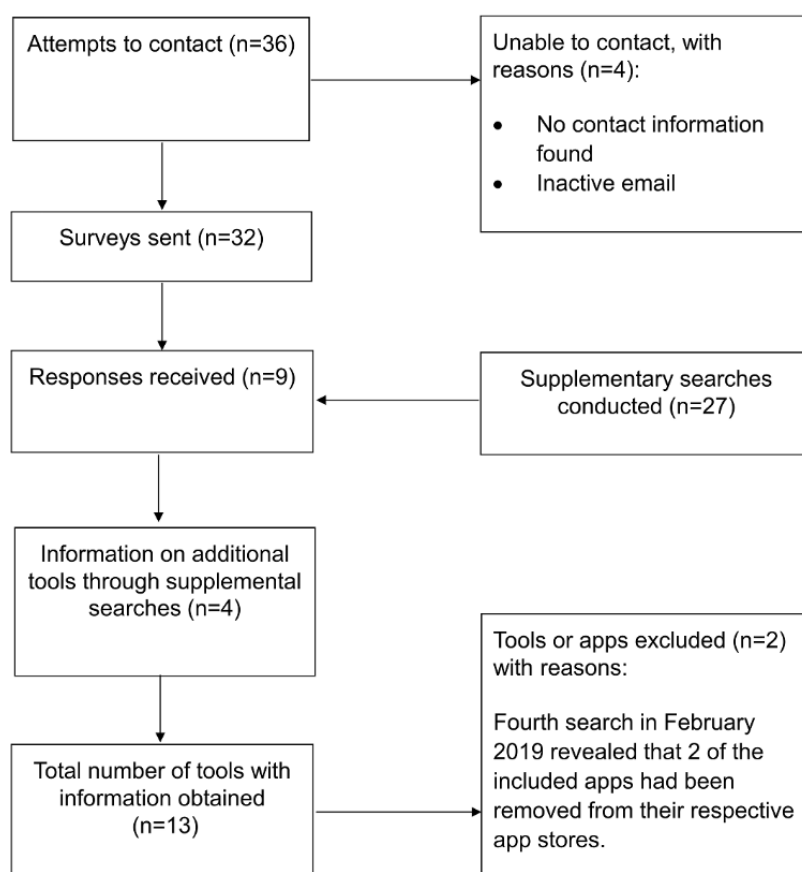
^dData not assessed/data not available.

^e3 signifies iPhone Operating System App Store.

^fDANA: Defense Automated Neurobehavioral Assessment.

^gMMSE is not related to the Mini–Mental State Exam [20]

Figure 2. Preferred Reporting Items for Systematic Reviews and Meta-Analyses flow diagram describing the Web-based survey and supplemental searches.



We identified 17 of the 25 tools from searching Google search, 2 by searching the iOS platform, 4 by searching Google Play, 1 was identified both in Google search and Google Play, and 1 in Google Play and iOS platform (Table 1). The time of test completion was reported to range from 1.5 min to 30 min. One of the Web-based cognitive tools (BrainTest [Electronic Self-Administered Gerocognitive Examination; eSAGE] tool [21]) was the digital version of the Self-Administered Gerocognitive Examination (SAGE) [22]. Most of the tools purported to assess multiple cognitive domains (Table 1). The most frequently assessed cognitive domain was memory (tested by 21 tools), then attention (8 tools), followed by executive

function (6 tools). Cognitive domains that were less frequently assessed (the *Other* category) included orientation, language, fluency, and reaction time. If the cognitive domains tested by an included tool were not explicitly stated or could not be identified by reading the instructions of the tool, it was reported in Table 1 as not available.

A total of 6 survey respondents provided information concerning the collection of normative data, reliability, validity, and sensitivity/specificity for the detection of cognitive impairment (Table 2). We identified psychometric data only for 1 additional test in supplementary searches. For the rest of the tests, no psychometric data were available.

Table 2. Summary of availability of psychometric test data.

Test name	Normative data	Reliability	Validity	Sensitivity and specificity ^a
BrainTest (electronic Self-Administered Gerocognitive Examination) [21]	✓ ^b	✓✓ ^c	✓	✓✓
BrainCheck [23]	✓✓	✓✓	✓✓	✗ ^d
MemTrax–The Online Memory Screening Test (free version) [24]	✗	✗	✗	✗
MemTrax Proprietary [24]	✓✓	✓	✓	✗
Self-Assessment of Cognition [25]	✓	✓	✗	✗
Husketest [26,27]	✓✓	✗	✓✓	✗
Dementia Screener [28]	✗	✗	✗	✗
DANA ^e Brain Vital [29]	✓✓	✓✓	✓✓	✓✓
DANA Modular [30]	✓✓	✓✓	✓✓	✓✓
Cogniciti [31]	✓✓	✓✓	✓✓	✗
Savonix Mobile [32]	✗	✗	✗	✗
Imprint Memory Assessment [33]	✗	✗	✗	✗
Memory Quiz [34]	✗	✗	✗	✗
Dementia Test [35]	✗	✗	✗	✗
RateMyMemory [36]	✗	✗	✗	✗
Daily Mail Dementia Quiz [37]	✗	✗	✗	✗
Cognitive Function Test [38]	✗	✗	✗	✗
The Cleveland Clinic Brain Check-Up [39]	✗	✗	✗	✗
Mindcrowd [40]	✗	✗	✗	✗
MyBrainTest [41]	✗	✗	✗	✗
Memory Health Check [42]	✗	✗	✗	✗
On Memory [43]	✗	✗	✗	✗
Psychology Today Memory Test [44]	✗	✗	✗	✗
Brainlab Cognition [45]	✗	✗	✗	✗
Dementia Test–Risk Calculator of Dementia [46]	✗	✗	✗	✗
MMSE ^f [47]	✗	✗	✗	✗

^aTo detect dementia or mild cognitive impairment.

^bOne tick indicates data reported to be in preparation.

^cTwo ticks indicate data currently available.

^dA cross indicates no data available or no response.

^eDANA: Defense Automated Neurobehavioral Assessment.

^fMMSE is not related to the Mini–Mental State Exam [20]

BrainTest (Electronic Self-Administered Gerocognitive Examination)

BrainTest is based on the SAGE [22], a brief cognitive assessment for identification of MCI and early dementia. Developers reported that they expected to have normative data by the end of 2019. Spearman correlations between eSAGE with SAGE ($r_s=0.88$), Montreal Cognitive Assessment (MoCA; $r_s=0.76$), and Mini-Mental State Examination (MMSE; $r_s=0.67$) were strong, demonstrating high convergent validity. The developers found no difference between the eSAGE and SAGE with regard to sensitivity or specificity in differentiating people

without dementia (MCI or normal) from those with dementia [48]. The sensitivity and specificity of eSAGE were 90% and 87%, respectively, for differentiating dementia from normal cognition and were 90% and 75%, respectively, for differentiating MCI from dementia [48]. eSAGE reportedly had 90% specificity and 71% sensitivity in differentiating those with cognitive impairment (MCI and dementia) from those with normal cognitive function [48]. The developers of BrainTest reported that data on the test-retest reliability of eSAGE were available; however, they did not share or identify any information on reliability.

BrainCheck

BrainCheck offers a collection of neurocognitive tests intended to track cognitive health over time. According to its developers, BrainCheck has a normative database that contains more than 20,000 test results, but they did not provide any further details. BrainCheck had high 7-day test-retest reliability, with correlation coefficients ranging from 0.6 to 0.9 by subtest. The BrainCheck website reported data on sensitivity and specificity of identifying traumatic brain injury versus normal cognition [49], but no data with regard to dementia or MCI were reported. BrainCheck developers reported that a publication was underway reporting the validity of BrainCheck in relation to dementia.

MemTrax

MemTrax is a test of recognition memory that is intended for early detection of memory problems that may be indicative of dementia. Normative data are reportedly available for the proprietary version of the MemTrax test. In a 2011 validation study, the developers gathered data from 868 individuals from 25 sites (including community events, senior citizen centers, and retirement living communities in the San Francisco Bay Area). The age range of participants was 40 to 97 years; 68.7% were female with formal education ranging from 6 to 21 years [50]. Recognition memory declined with age, and the decline was accompanied with a greater than 3-fold increase in variability over the age range. Individuals with more than 13 years of education had higher scores than those with fewer years of formal education [50]. The developers reported that test-retest reliability and convergent validity data for MemTrax (vs MoCA) [51] were being collected.

Self-Assessment of Cognition

Self-Assessment of Cognition (SAC) is a brief cognitive screening tool designed to give older adults and their health care professionals information about memory and cognitive functioning. The developers reported that SAC has normative data from a combined sample of 206 residents of long-term care facilities for older adults (manuscripts for both studies were reportedly in preparation). The developers reported that they are collecting reliability and validity data.

Husketest

Husketest is a multiple-choice picture recognition test. The developers of Husketest reported that they collected normative data from 795 individuals with an age range of 4 to 86 years. They also reported small effects of education and age on performance and that the test suffers from a ceiling effect, which may limit the sensitivity of the test. The developers provided no further details.

Defense Automated Neurobehavioral Assessment Modular

This US Food and Drug Administration (FDA)-approved tool comprises a suite of 8 cognitive tests and 7 psychological surveys. The developers gathered normative data from 814 adult military veterans (71% male) aged between 18 and 64 years [52]. The test-retest reliability of Defense Automated Neurobehavioral Assessment (DANA) subtests procedural reaction time (PRT) and simple reaction time was 0.75 and 0.81,

respectively [52]. The developers assessed the sensitivity of DANA in detecting MCI and Alzheimer Disease (AD) in a pilot study with 7 patient and caregiver dyads [53]. The group with AD or cognitive impairment performed worse than the caregivers for all the subtests of DANA, apart from simple reaction time [53]. Finally, the developers reported relationships among 3 DANA subtests, namely, memory search, PRT, and spatial processing with MMSE scores [54], but they did not report the correlation values.

Cogniciti

Cogniciti is a self-assessment tool that is intended to be used by individuals to determine whether they should raise their concerns about memory with their primary care provider. Cogniciti includes (1) spatial working memory, (2) Stroop interference, (3) face-name association, and (4) letter-number alteration subtests. The developers collected normative data from 361 healthy adults aged 50 to 79 years [55]. Internal consistency (Cronbach alpha) of the face-name association test was below acceptable levels ($\alpha=.62$), whereas consistency was excellent ($\alpha=.96$) for the Stroop interference subtest. There were insufficient trials to calculate the internal consistency for the other 2 tasks. The developers reported retest-reliability ranging between 0.49 and 0.82 for individual subtests and 0.72 for the overall score. The developers calculated correlations between age and performance for each subtest as a measure of construct validity. These correlations were small to medium in size: -0.20 to 0.31 . They examined intersubtest correlations as a measure of convergent validity, and these correlations were again small to medium in size: -0.27 to 0.30 .

Discussion

Principal Findings

This is the first review of the quantity and quality of app- and Web-based self-assessment tools for cognitive impairment. We identified 25 tools via Google search, Google Play, and iOS platform searches, but only 7 tests had any information concerning psychometric quality, and only 1 tool (DANA) reported data on performance norms, reliability, validity, and sensitivity or specificity for the detection of cognitive impairment. The lack of information about the psychometric properties of the majority of tools indicates that although the number of cognitive self-assessment eHealth tools is increasing [11,56], their quality is unknown. The uncertain validity of the majority of tools is a concern as some tools may fail to identify people who have cognitive impairment or may cause undue anxiety by falsely identifying cognitive impairment. The focus of this review was on self-assessment tools that were not intended to inform or replace clinical decisions nor could be used to inform provision of treatment, that is, are not medical devices. However, the definition of software as a medical device is unclear, particularly in the context of software intended to identify cognitive impairment indicative of dementia. Classification of software as a medical device should consider the potential of the software to cause harm (in this case, by falsely identifying or missing true cases of cognitive impairment). We suggest that it is important to establish standards and identify ways of conveying the reliability of tools

to users so that users are able to make informed choices about the tools they use and the results obtained from each tool. Developers have an ethical duty to establish the psychometric quality of the tools they offer and provide appropriate caveats on the interpretation of results obtained as well as give specific instructions for acting on the results of the self-test. eHealth apps tend to be categorized in the *Health and Fitness* or *Medical* sections of app stores. This terminology may encourage users to view these tools as legitimate sources of medical information. Formal regulation by national authorities (eg, the US FDA or the UK Medicines and Healthcare products Regulatory Agency) is a possibility, although they may struggle to keep pace with the rapid development in eHealth [57]. The FDA recently proposed that it would regulate only those apps that provide diagnostic and treatment recommendations to physicians [58,59]. This new guidance excludes all app- and Web-based self-assessment tools [60].

In the European Union's model, developers can file an application for medical device registration with any member state of the European Union. The Conformité Européenne mark issued by the respective body in each member state is then valid throughout the European Union. The European regulatory system could offer another potential model for regulation. However, medical devices approved in Europe only need to establish performance and safety but not clinical efficacy or effectiveness [60]. The 1988 Clinical Laboratory Improvement Amendments (CLIA) model has been suggested as a possible solution for the regulation of mHealth, including mobile computing, medical sensor, and communication technologies for health care apps [8,61]. CLIA is a system for ensuring that diagnostic testing laboratories comply with US regulatory standards. Nonprofit accrediting agencies with authority to issue certification under federal CLIA standards ensure consistency of record keeping and staff training [61,62]. Larson [60] argued that a CLIA model could ensure that mHealth apps comply with basic standards, including (1) accessibility: clear language, usability, and affordability; (2) privacy and security, including data sharing with third parties and; (3) content: apps developed with health care experts contain accurate information, limit advertising, and explain monetization (eg, referral generation or sales) and conflicts of interest [17]. Existence of a recognized standard of quality for mHealth apps could provide an additional incentive for developers to establish the psychometric quality of the tools they provide. Establishing the psychometric quality of assessments requires significant investment. Developing and establishing the psychometric properties of a cognitive test requires psychometric expertise and carefully controlled testing of large numbers of people with and without cognitive impairment. If an app is made available for free or at a low cost, developers would have to either (1) have a business model that funds development and running costs without directly transferring those costs to the end user (eg, apps that make referrals to for-profit health care providers) or (2) be well funded by charity, social enterprise, or government organizations (eg,

DANA developed by the US military). Development cost limitations are likely to limit the number of good quality self-assessment apps.

The tools in this review were all either free or low cost and readily accessible. eHealth tools may have the potential to address the underidentification of dementia by increasing the awareness of cognitive impairment and directing people who may have cognitive difficulties to appropriate clinical diagnostic and support services. Overall, 2 tools mentioned in this review were linked to clinical services (Cogniciti) or provided specific recommendations to speak with a doctor (eSAGE). Furthermore, 3 tests provided advice on healthy lifestyles to promote cognitive health (Daily Mail Dementia Quiz, Memory Health Check, MyBrainTest, and On Memory). However, 19 out of the 25 tools included in the review did not directly link users with a clinician or support service. The lack of clear advice or direction on what steps should be taken in the event of a failed screening is of concern; some tests may cause anxiety by identifying a possible impairment without providing advice about how to seek help. Lack of clear direction may also mean that few people may act on the results of a failed cognitive screening. We did not identify any study that evaluated the proportion of people who failed the screening or who went on to seek help. In addition, none of the studies identified barriers to acting on the results of failed tests nor investigated how help might best be provided. The lack of follow-up actions may be a serious shortcoming of most Web-based cognitive self-assessments.

Further efforts should be made to link the results of Web-based cognitive self-assessments directly to clinical services to minimize anxiety caused by identification of a possible impairment and facilitate action on the result of a failed screening. eHealth cognitive self-assessment tools could potentially utilize the growing acceptance and use of video conferencing in geriatric psychiatry care by clinicians and patients. Videoconferencing is well received by patients and clinicians [63] and may facilitate the reach of clinical services in underserved areas [64]. Video consultations may help increase diagnostic coverage particularly in LMICs. As an alternative to referral to clinical services, Web-based cognitive assessments could direct test takers to interventions delivered via the internet to support cognitive function. For example, the Imprint Memory Assessment eHealth tool links to a Web-based memory health program based on diet, exercise, cognitive training, and vascular risk monitoring [65]. Formal evaluation of the risks and benefits of a cognitive eHealth paradigm is an urgent priority.

Conclusions

There is a need to establish the quality of cognitive self-assessment tools while maintaining their low cost and easy accessibility. A regulatory model should ensure standards of accessibility, privacy, and content. The results of app- and Web-based cognitive self-assessments should be linked to appropriate clinical and support services.

Acknowledgments

This work was supported by SENSE-Cog project. This project has received funding from the European Union's Horizon 2020 research and innovation program under grant agreement number 668648. PD is supported by the National Institute for Health Research Manchester Biomedical Research Centre.

Authors' Contributions

APC conducted an update of the searches and wrote the manuscript, including the Introduction, Methods, Results, and Discussion. PD contributed to the development of the search strategy and methodology and provided significant input to the manuscript, including the Introduction, Methods, Results, and Discussion sections. AP contributed to the development of the search strategy and methodology and conducted the initial searches with MN. WKY contributed to the development of the manuscript. IL is the chief investigator for the SENSE-Cog project and contributed to the development of the manuscript.

Conflicts of Interest

None declared.

Multimedia Appendix 1

Survey questions.

[[DOC File , 77 KB-Multimedia Appendix 1](#)]

References

1. Patterson C. Alzheimer's Disease International. London: Alzheimer's Disease International; 2018 Sep. World Alzheimer Report 2018 - The State of the Art of Dementia Research: New Frontiers URL: <https://www.alz.co.uk/research/WorldAlzheimerReport2018.pdf> [accessed 2019-12-03]
2. Waldemar G, Phung KT, Burns A, Georges J, Hansen FR, Iliffe S, et al. Access to diagnostic evaluation and treatment for dementia in Europe. *Int J Geriatr Psychiatry* 2007 Jan;22(1):47-54. [doi: [10.1002/gps.1652](https://doi.org/10.1002/gps.1652)] [Medline: [17044135](https://pubmed.ncbi.nlm.nih.gov/17044135/)]
3. Nakamura AE, Opaleye D, Tani G, Ferri CP. Dementia underdiagnosis in Brazil. *Lancet* 2015 Jan 31;385(9966):418-419. [doi: [10.1016/S0140-6736\(15\)60153-2](https://doi.org/10.1016/S0140-6736(15)60153-2)] [Medline: [25706975](https://pubmed.ncbi.nlm.nih.gov/25706975/)]
4. Jitapunkul S, Chansirikanjana S, Thamarpirat J. Undiagnosed dementia and value of serial cognitive impairment screening in developing countries: a population-based study. *Geriatr Gerontol Int* 2009 Mar;9(1):47-53. [doi: [10.1111/j.1447-0594.2008.00501.x](https://doi.org/10.1111/j.1447-0594.2008.00501.x)] [Medline: [19260979](https://pubmed.ncbi.nlm.nih.gov/19260979/)]
5. Dias A, Patel V. Closing the treatment gap for dementia in India. *Indian J Psychiatry* 2009 Jan;51(Suppl 1):S93-S97 [FREE Full text] [Medline: [21416026](https://pubmed.ncbi.nlm.nih.gov/21416026/)]
6. Prince M, Comas-Herrera A, Knapp M, Guerchet M, Karagiannidou M. Alzheimer's Disease International. London: Alzheimer's Disease International; 2016 Sep. World Alzheimer Report 2016. Improving Healthcare for People Living With Dementia: Coverage, Quality, and Costs Now and in the Future URL: <https://www.alz.co.uk/research/WorldAlzheimerReport2016.pdf> [accessed 2019-12-03]
7. World Health Organization, International Telecommunication Union. National eHealth Strategy Toolkit. Geneva: World Health Organization; 2012.
8. Mechael PN. The case for mHealth in developing countries. *Innov Technol Governance Glob* 2009;4(1):103-118. [doi: [10.1162/itgg.2009.4.1.103](https://doi.org/10.1162/itgg.2009.4.1.103)]
9. Internet Live Stats. 2016. Number of Internet Users URL: <http://www.internetlivestats.com/internet-users/> [accessed 2019-02-12] [WebCite Cache ID 781TVhU6C]
10. Internet World Stats - Usage and Population Statistics. 2019. World Internet Users and 2019 Population Stats URL: <http://www.internetworldstats.com/stats.htm> [accessed 2019-04-16] [WebCite Cache ID 781TmbfPd]
11. Ivatury G, Moore J, Bloch A. A doctor in your pocket: health hotlines in developing countries. *Innov Technol Governance Glob* 2009 Jan;4(1):119-153. [doi: [10.1162/itgg.2009.4.1.119](https://doi.org/10.1162/itgg.2009.4.1.119)]
12. Botha M, Botha A, Herselman M. The Benefits and Challenges of e-Health Applications: A Content Analysis of the South African context. In: Proceedings of The International Conference on Computer Science, Computer Engineering, and Social Media. 2014 Presented at: CSCESM'14; December 12-14, 2014; Thessaloniki, Greece.
13. Eng DS, Lee JM. The promise and peril of mobile health applications for diabetes and endocrinology. *Pediatr Diabetes* 2013 Jun;14(4):231-238 [FREE Full text] [doi: [10.1111/pedi.12034](https://doi.org/10.1111/pedi.12034)] [Medline: [23627878](https://pubmed.ncbi.nlm.nih.gov/23627878/)]
14. Hamilton AD, Brady RR. Medical professional involvement in smartphone 'apps' in dermatology. *Br J Dermatol* 2012 Jul;167(1):220-221. [doi: [10.1111/j.1365-2133.2012.10844.x](https://doi.org/10.1111/j.1365-2133.2012.10844.x)] [Medline: [22283748](https://pubmed.ncbi.nlm.nih.gov/22283748/)]
15. Rosser BA, Eccleston C. Smartphone applications for pain management. *J Telemed Telecare* 2011;17(6):308-312. [doi: [10.1258/jtt.2011.101102](https://doi.org/10.1258/jtt.2011.101102)] [Medline: [21844177](https://pubmed.ncbi.nlm.nih.gov/21844177/)]
16. Rodrigues MA, Visvanathan A, Murchison JT, Brady RR. Radiology smartphone applications; current provision and cautions. *Insights Imaging* 2013 Oct;4(5):555-562 [FREE Full text] [doi: [10.1007/s13244-013-0274-4](https://doi.org/10.1007/s13244-013-0274-4)] [Medline: [23912880](https://pubmed.ncbi.nlm.nih.gov/23912880/)]

17. Cook VE, Ellis AK, Hildebrand KJ. Mobile health applications in clinical practice: pearls, pitfalls, and key considerations. *Ann Allergy Asthma Immunol* 2016 Aug;117(2):143-149. [doi: [10.1016/j.anai.2016.01.012](https://doi.org/10.1016/j.anai.2016.01.012)] [Medline: [27499542](https://pubmed.ncbi.nlm.nih.gov/27499542/)]
18. Shelton K. Forbes Magazine. 2017 Oct 30. The Values of Search Results Rankings URL: <https://www.forbes.com/sites/forbesagencycouncil/2017/10/30/the-value-of-search-results-rankings/#66ffa9f644d3> [accessed 2019-12-03]
19. Statista. Average prices for apps in the Apple App Store as of November 2019 URL: <https://www.statista.com/statistics/267346/average-apple-app-store-price-app/> [accessed 2019-02-22] [WebCite Cache ID 781TxyIZp]
20. Snyder PJ, Jackson CE, Petersen RC, Khachaturian AS, Kaye J, Albert MS, et al. Assessment of cognition in mild cognitive impairment: a comparative study. *Alzheimers Dement* 2011 May;7(3):338-355 [FREE Full text] [doi: [10.1016/j.jalz.2011.03.009](https://doi.org/10.1016/j.jalz.2011.03.009)] [Medline: [21575877](https://pubmed.ncbi.nlm.nih.gov/21575877/)]
21. BrainTest (eSAGE). URL: <https://braintest.com> [accessed 2019-04-30] [WebCite Cache ID 781BvQDqE]
22. Scharre DW, Chang S, Murden RA, Lamb J, Beversdorf DQ, Katagi M, et al. Self-administered Gerocognitive Examination (SAGE): a brief cognitive assessment Instrument for mild cognitive impairment (MCI) and early dementia. *Alzheimer Dis Assoc Disord* 2010;24(1):64-71. [doi: [10.1097/WAD.0b013e3181b03277](https://doi.org/10.1097/WAD.0b013e3181b03277)] [Medline: [20220323](https://pubmed.ncbi.nlm.nih.gov/20220323/)]
23. WebCite. BrainCheck URL: <https://www.webcitation.org/781JpWIPq> [accessed 2019-04-30] [WebCite Cache ID 781JpWIPq]
24. MemTrax. URL: <https://memtrax.com/> [accessed 2019-04-30] [WebCite Cache ID 781M2Z93g]
25. WebCite. Self-Assessment of Cognition URL: <https://www.webcitation.org/781MuD8zc> [accessed 2019-04-30] [WebCite Cache ID 781MuD8zc]
26. iTunes - Apple. Husketest App URL: <https://itunes.apple.com/is/app/husketest/id853661406?mt=8> [accessed 2019-04-30]
27. National Knowledge Center for Dementia. Memory test - test your memory URL: <http://www.videnscenterfordemens.dk/husketest> [accessed 2019-04-30] [WebCite Cache ID 781MwODDy]
28. Google Play Store. Dementia Screener URL: https://play.google.com/store/apps/details?id=appinventor.ai_lcchien86.DementiaScreener [accessed 2019-04-30]
29. Google Play Store. DANA Brain Vital URL: https://play.google.com/store/apps/details?id=com.atinc.staging.brainVital&hl=en_GB [accessed 2019-04-30]
30. Google Play Store. DANA Modular URL: https://play.google.com/store/apps/details?id=com.atinc.staging.full&hl=en_GB [accessed 2019-04-30]
31. Cogniciti. URL: <https://cogniciti.com/> [accessed 2019-04-30] [WebCite Cache ID 781MzGauE]
32. Google Play Store. Savonix Mobile URL: https://play.google.com/store/apps/details?id=com.savonix.savonixbeta&hl=en_GB&showAllReviews=true [accessed 2019-04-30]
33. Neurotrack. URL: <https://neurotrack.com/> [accessed 2019-04-30] [WebCite Cache ID 781NIQ4q5]
34. Alzheimer's Prevention. Memory Quiz URL: <http://alzheimersprevention.org/alzheimers-info/memory-quiz/> [accessed 2019-04-30] [WebCite Cache ID 781N3DKxD]
35. IllnessQuiz. Dementia Test URL: <https://illnessquiz.com/dementia-test/> [accessed 2019-04-30] [WebCite Cache ID 781N56bXU]
36. Memory Rate. URL: <http://memoryrate.com/> [accessed 2019-04-30] [WebCite Cache ID 781N6NVky]
37. Hodgekiss A. Daily Mail Online. 2017 Mar 20. Do You Have a Memory Like a Goldfish? Take This Test to Find Out if You or Your Loved Ones Have a Reason to Worry URL: <https://www.dailymail.co.uk/health/article-4332608/Do-memory-like-goldfish.html> [accessed 2019-04-30] [WebCite Cache ID 781N8Bf1N]
38. Food for the Brain. Cognitive Function Test URL: <https://www.foodforthebrain.org/alzheimers-prevention/take-the-test.aspx> [accessed 2019-04-30] [WebCite Cache ID 781NA61Fp]
39. Healthy Brains by Cleveland Clinic. Get Your Free Online Self Assessment URL: <https://healthybrains.org/brain-check-up/> [accessed 2019-04-30] [WebCite Cache ID 781NBhFrz]
40. MindCrowd. URL: <https://www.mindcrowd.org/> [accessed 2019-04-30] [WebCite Cache ID 781NDwY4R]
41. MyBrainTest. Online Memory Tests URL: <https://www.mybraintest.org/online-memory-screening-tests/> [accessed 2019-04-30] [WebCite Cache ID 781NFEiDJ]
42. MemoryHealthCheck. Free Memory Loss Tests URL: <https://www.memorylosstest.com/free-memory-loss-tests-online/> [accessed 2019-04-30] [WebCite Cache ID 781NGskHv]
43. On Memory. Signs & Symptoms: Memory Test URL: <https://www.onmemory.ca/en/signs-symptoms/memory-test> [accessed 2019-04-30] [WebCite Cache ID 781NIAzIG]
44. Psychology Today. Memory Test URL: <http://psychologytoday.tests.psychtests.com/bin/transfer?req=MTF8MzM2MHwxOTQyMjE5OHwwfDE=&refempt=1501665258.19422198.11> [accessed 2019-04-30] [WebCite Cache ID 781NM3zfm]
45. App Store - Apple. Brainlab Cognition URL: <https://itunes.apple.com/gb/app/brainlab-cognition/id1109843085?mt=8> [accessed 2019-04-30]
46. App Store - Apple. Dementia Test - Risk Calculator of Dementia URL: <https://itunes.apple.com/gb/app/dementia-test-risk-calculator-of-dementia/id1014958634?mt=8> [accessed 2019-04-30]
47. Google Play Store. MMSE URL: https://play.google.com/store/apps/details?id=com.yasintanriverdi.mmse&hl=en_GB [accessed 2019-04-30]

48. Scharre DW, Chang SI, Nagaraja HN, Vrettos NE, Bornstein RA. Digitally translated Self-Administered Gerocognitive Examination (eSAGE): relationship with its validated paper version, neuropsychological evaluations, and clinical assessments. *Alzheimers Res Ther* 2017 Jun 27;9(1):44 [FREE Full text] [doi: [10.1186/s13195-017-0269-3](https://doi.org/10.1186/s13195-017-0269-3)] [Medline: [28655351](https://pubmed.ncbi.nlm.nih.gov/28655351/)]
49. Yang S, Flores B, Magal R, Harris K, Gross J, Ewbank A, et al. Diagnostic accuracy of tablet-based software for the detection of concussion. *PLoS One* 2017;12(7):e0179352 [FREE Full text] [doi: [10.1371/journal.pone.0179352](https://doi.org/10.1371/journal.pone.0179352)] [Medline: [28686616](https://pubmed.ncbi.nlm.nih.gov/28686616/)]
50. Ashford JW, Gere E, Bayley PJ. Measuring memory in large group settings using a continuous recognition test. *J Alzheimers Dis* 2011;27(4):885-895. [doi: [10.3233/JAD-2011-110950](https://doi.org/10.3233/JAD-2011-110950)] [Medline: [21908910](https://pubmed.ncbi.nlm.nih.gov/21908910/)]
51. Nasreddine ZS, Phillips NA, Bédirian V, Charbonneau S, Whitehead V, Collin I, et al. The Montreal Cognitive Assessment, MoCA: a brief screening tool for mild cognitive impairment. *J Am Geriatr Soc* 2005 Apr;53(4):695-699. [doi: [10.1111/j.1532-5415.2005.53221.x](https://doi.org/10.1111/j.1532-5415.2005.53221.x)] [Medline: [15817019](https://pubmed.ncbi.nlm.nih.gov/15817019/)]
52. Russo CR, Lathan CE. An evaluation of the consistency and reliability of the defense automated neurocognitive assessment tool. *Appl Psychol Meas* 2015 Oct;39(7):566-572 [FREE Full text] [doi: [10.1177/0146621615577361](https://doi.org/10.1177/0146621615577361)] [Medline: [29881027](https://pubmed.ncbi.nlm.nih.gov/29881027/)]
53. Lathan CE, Coffman I, Shewbridge R, Lee M, Cirio R. A pilot to investigate the feasibility of mobile cognitive assessment of elderly patients and caregivers in the home. *J Geriatr Palliat Care* 2016;4(1):6. [doi: [10.13188/2373-1133.1000017](https://doi.org/10.13188/2373-1133.1000017)]
54. Hollinger KR, Woods SR, Adams-Clark A, Choi SY, Franke CL, Susukida R, et al. Defense automated neurobehavioral assessment accurately measures cognition in patients undergoing electroconvulsive therapy for major depressive disorder. *J ECT* 2018 Mar;34(1):14-20. [doi: [10.1097/YCT.0000000000000448](https://doi.org/10.1097/YCT.0000000000000448)] [Medline: [28991066](https://pubmed.ncbi.nlm.nih.gov/28991066/)]
55. Troyer AK, Rowe G, Murphy KJ, Levine B, Leach L, Hasher L. Development and evaluation of a self-administered on-line test of memory and attention for middle-aged and older adults. *Front Aging Neurosci* 2014;6:335 [FREE Full text] [doi: [10.3389/fnagi.2014.00335](https://doi.org/10.3389/fnagi.2014.00335)] [Medline: [25540620](https://pubmed.ncbi.nlm.nih.gov/25540620/)]
56. Rietjens JA, Sudore RL, Connolly M, van Delden JJ, Drickamer MA, Droger M, European Association for Palliative Care. Definition and recommendations for advance care planning: an international consensus supported by the European Association for Palliative Care. *Lancet Oncol* 2017 Sep;18(9):e543-e551. [doi: [10.1016/S1470-2045\(17\)30582-X](https://doi.org/10.1016/S1470-2045(17)30582-X)] [Medline: [28884703](https://pubmed.ncbi.nlm.nih.gov/28884703/)]
57. Steinhubl SR, Muse ED, Topol EJ. Can mobile health technologies transform health care? *J Am Med Assoc* 2013 Dec 11;310(22):2395-2396. [doi: [10.1001/jama.2013.281078](https://doi.org/10.1001/jama.2013.281078)] [Medline: [24158428](https://pubmed.ncbi.nlm.nih.gov/24158428/)]
58. Food and Drug Administration. Maryland, USA: Food and Drug Administration; 2015. Policy for Device Software Functions and Mobile Medical Applications: Guidance for Industry and Food and Drug Administration Staff URL: <https://www.fda.gov/regulatory-information/search-fda-guidance-documents/policy-device-software-functions-and-mobile-medical-applications> [accessed 2019-04-30]
59. Food and Drug Administration. Maryland, USA: Food and Drug Administration; 2019 Sep. Clinical Decision Support Software: Guidance for Industry and Food and Drug Administration Staff URL: <https://www.fda.gov/downloads/medicaldevices/deviceregulationandguidance/guidancedocuments/ucm587819.pdf> [accessed 2019-04-30]
60. Larson RS. A path to better-quality mHealth apps. *JMIR Mhealth Uhealth* 2018 Jul 30;6(7):e10414 [FREE Full text] [doi: [10.2196/10414](https://doi.org/10.2196/10414)] [Medline: [30061091](https://pubmed.ncbi.nlm.nih.gov/30061091/)]
61. Centers for Medicare & Medicaid Services. 1988. Clinical Laboratory Improvement Amendments URL: <https://www.cms.gov/Regulations-and-Guidance/Legislation/CLIA/index.html> [accessed 2019-03-14]
62. Yost JA. Laboratory inspection: the view from CMS. *Lab Med* 2003;34(2):136-140. [doi: [10.1309/uv7dpf0u581y2m8h](https://doi.org/10.1309/uv7dpf0u581y2m8h)]
63. Barton C, Morris R, Rothlind J, Yaffe K. Video-telemedicine in a memory disorders clinic: evaluation and management of rural elders with cognitive impairment. *Telemed J E Health* 2011 Dec;17(10):789-793. [doi: [10.1089/tmj.2011.0083](https://doi.org/10.1089/tmj.2011.0083)] [Medline: [22023458](https://pubmed.ncbi.nlm.nih.gov/22023458/)]
64. Bossen AL, Kim H, Williams KN, Steinhoff AE, Strieker M. Emerging roles for telemedicine and smart technologies in dementia care. *Smart Homecare Technol Telehealth* 2015;3:49-57 [FREE Full text] [doi: [10.2147/SHTT.S59500](https://doi.org/10.2147/SHTT.S59500)] [Medline: [26636049](https://pubmed.ncbi.nlm.nih.gov/26636049/)]
65. Ngandu T, Lehtisalo J, Solomon A, Levälähti E, Ahtiluoto S, Antikainen R, et al. A 2 year multidomain intervention of diet, exercise, cognitive training, and vascular risk monitoring versus control to prevent cognitive decline in at-risk elderly people (FINGER): a randomised controlled trial. *Lancet* 2015 Jun 6;385(9984):2255-2263. [doi: [10.1016/S0140-6736\(15\)60461-5](https://doi.org/10.1016/S0140-6736(15)60461-5)] [Medline: [25771249](https://pubmed.ncbi.nlm.nih.gov/25771249/)]

Abbreviations

- AD:** Alzheimer Disease
- CLIA:** Clinical Laboratory Improvement Amendments
- DANA:** Defense Automated Neurobehavioral Assessment
- eHealth:** electronic health
- eSAGE:** Electronic Self-Administered Gerocognitive Exam
- FDA:** Food and Drug Administration
- iOS:** iPhone Operating System
- LMIC:** low- and middle-income country

MCI: mild cognitive impairment
mHealth: mobile health
MoCA: Montreal Cognitive Assessment
MMSE: Mini-Mental State Examination
PRT: procedural reaction time
SAC: Self-Assessment of Cognition
SAGE: Self-Administered Gerocognitive Examination

Edited by G Eysenbach; submitted 02.05.19; peer-reviewed by D Scharre, RK B, S Sankaran; comments to author 01.07.19; revised version received 16.08.19; accepted 24.09.19; published 17.01.20

Please cite as:

Charalambous AP, Pye A, Yeung WK, Leroi I, Neil M, Thodi C, Dawes P
Tools for App- and Web-Based Self-Testing of Cognitive Impairment: Systematic Search and Evaluation
J Med Internet Res 2020;22(1):e14551
URL: <https://www.jmir.org/2020/1/e14551>
doi: [10.2196/14551](https://doi.org/10.2196/14551)
PMID: [31951218](https://pubmed.ncbi.nlm.nih.gov/31951218/)

©Anna Pavlina Charalambous, Annie Pye, Wai Kent Yeung, Iracema Leroi, Malcolm Neil, Chryssoula Thodi, Piers Dawes. Originally published in the Journal of Medical Internet Research (<http://www.jmir.org>), 17.01.2020. This is an open-access article distributed under the terms of the Creative Commons Attribution License (<https://creativecommons.org/licenses/by/4.0/>), which permits unrestricted use, distribution, and reproduction in any medium, provided the original work, first published in the Journal of Medical Internet Research, is properly cited. The complete bibliographic information, a link to the original publication on <http://www.jmir.org/>, as well as this copyright and license information must be included.